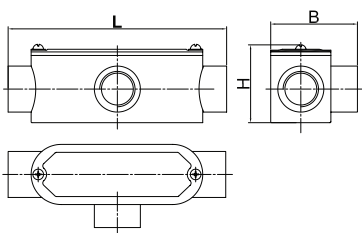


RCCN 日成PB-T型三通分线盒 Pull Box



| 型号 Item No. | 螺牙规格 Specification | L mm | B mm | H mm | 包装 Packing |
|----------------|-----------------------|---------|---------|---------|---------------|
| PB-T-G1/2 | 1/2" | 118 | 51 | 41 | 每包 5pcs |
| PB-T-G3/4 | 3/4" | 135 | 55 | 48 | |
| PB-T-G1 | 1" | 152 | 66 | 52 | |
| PB-T-G1-1/4 | 1 1/4" | 180 | 80 | 66 | |
| PB-T-G1-1/2 | 1 1/2" | 190 | 76 | 70 | |
| PB-T-G2 | 2" | 252 | 112 | 82 | |
| PB-T-G2-1/2 | 2 1/2" | 265 | 130 | 110 | |
| PB-T-G3 | 3" | 280 | 145 | 120 | |
| PB-T-G4 | 4" | 300 | 170 | 140 | |

产品材质:铝合金制成.

产品特性:1.可直接连接对应外螺纹硬管.

2.配合日成NBG-G接头和MCR软管接线.

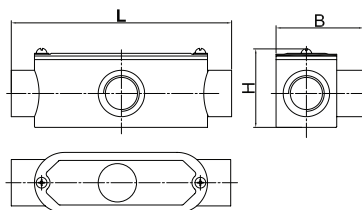
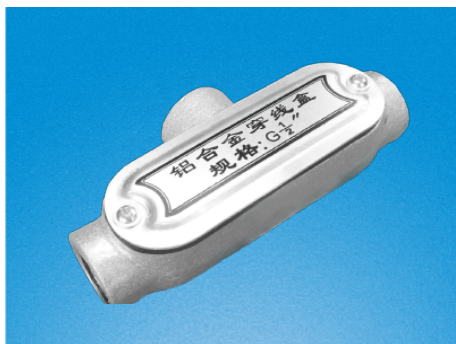
Material:Aluminium metal

Features:1.can be connected with outer thread rigid conduit directly

2.usded with RCCN NBG-G connectors amd ,MCR flexible conduit

RCCN 日成PB-BT型后三通分线盒 Pull Box

单位/Unit:mm



| 型号 Item No. | 螺牙规格 Specification | L mm | B mm | H mm | 包装 Packing |
|----------------|-----------------------|---------|---------|---------|---------------|
| PB-BT-G1/2 | 1/2" | 115 | 34 | 47 | 每包 5pcs |
| PB-BT-G3/4 | 3/4" | 135 | 38 | 58 | |
| PB-BT-G1 | 1" | 152 | 46 | 70 | |
| PB-BT-G1-1/4 | 1 1/4" | 180 | 54 | 80 | |
| PB-BT-G1-1/2 | 1 1/2" | 190 | 58 | 86 | |
| PB-BT-G2 | 2" | 245 | 74 | 104 | |
| PB-BT-G2-1/2 | 2 1/2" | 265 | 93 | 135 | |
| PB-BT-G3 | 3" | 280 | 108 | 150 | |
| PB-BT-G4 | 4" | 300 | 132 | 170 | |

产品材质:铝合金制成.

产品特性:1.可直接连接对应外螺纹硬管.

2.配合日成NBG-G接头和MCR软管接线.

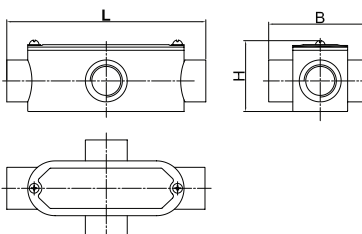
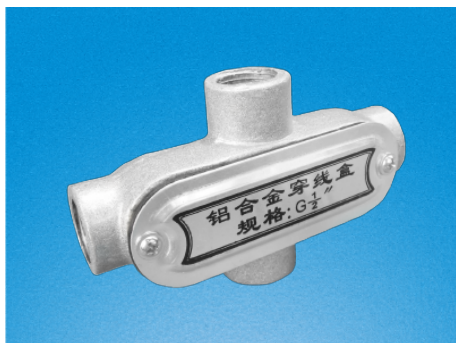
Material:Aluminium metal

Features:1.can be connected with outer thread rigid conduit directly

2.usded with RCCN NBG-G connectors amd ,MCR flexible conduit

RCCN 日成PB-X型四通分线盒 Pull Box

单位/Unit:mm



| 型号 Item No. | 螺牙规格 Specification | L mm | B mm | H mm | 包装 Packing |
|----------------|-----------------------|---------|---------|---------|---------------|
| PB-X-G1/2 | 1/2" | 118 | 70 | 41 | 每包 5pcs |
| PB-X-G3/4 | 3/4" | 135 | 72 | 48 | |
| PB-X-G1 | 1" | 152 | 85 | 52 | |
| PB-X-G1-1/4 | 1 1/4" | 180 | 104 | 66 | |
| PB-X-G1-1/2 | 1 1/2" | 190 | 95 | 70 | |
| PB-X-G2 | 2" | 252 | 144 | 82 | |
| PB-X-G2-1/2 | 2 1/2" | 265 | 165 | 110 | |
| PB-X-G3 | 3" | 280 | 182 | 120 | |
| PB-X-G4 | 4" | 300 | 210 | 140 | |

产品材质:铝合金制成.

产品特性:1.可直接连接对应外螺纹硬管.

2.配合日成NBG-G接头和MCR软管接线.

Material:Aluminium metal

Features:1.can be connected with outer thread rigid conduit directly

2.usded with RCCN NBG-G connectors amd ,MCR flexible conduit