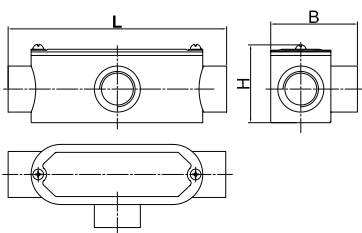


## RCCN 日成PB-T型三通分线盒 Pull Box



型号 Item No.	螺牙规格 Specification	L mm	B mm	H mm	包装 Packing
PB-T-G1/2	1/2"	118	51	41	每包 5pcs
PB-T-G3/4	3/4"	135	55	48	
PB-T-G1	1"	152	66	52	
PB-T-G1-1/4	1 1/4"	180	80	66	
PB-T-G1-1/2	1 1/2"	190	76	70	
PB-T-G2	2"	252	112	82	
PB-T-G2-1/2	2 1/2"	265	130	110	
PB-T-G3	3"	280	145	120	
PB-T-G4	4"	300	170	140	

产品材质:铝合金制成.

产品特性:1.可直接连接对应外螺纹硬管.

2.配合日成NBG-G接头和MCR软管接线.

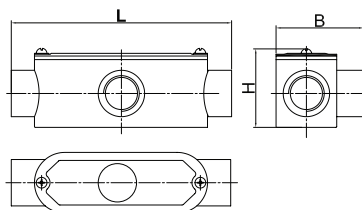
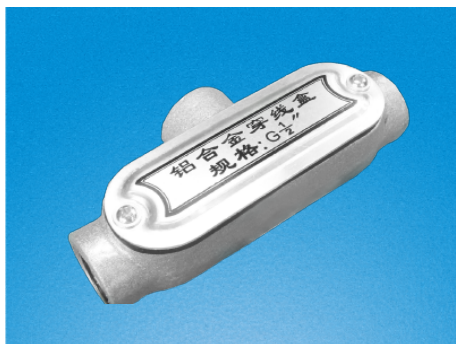
Material:Aluminium metal

Features:1.can be connected with outer thread rigid conduit directly

2.usded with RCCN NBG-G connectors amd ,MCR flexible conduit

## RCCN 日成PB-BT型后三通分线盒 Pull Box

单位/Unit:mm



型号 Item No.	螺牙规格 Specification	L mm	B mm	H mm	包装 Packing
PB-BT-G1/2	1/2"	115	34	47	每包 5pcs
PB-BT-G3/4	3/4"	135	38	58	
PB-BT-G1	1"	152	46	70	
PB-BT-G1-1/4	1 1/4"	180	54	80	
PB-BT-G1-1/2	1 1/2"	190	58	86	
PB-BT-G2	2"	245	74	104	
PB-BT-G2-1/2	2 1/2"	265	93	135	
PB-BT-G3	3"	280	108	150	
PB-BT-G4	4"	300	132	170	

产品材质:铝合金制成.

产品特性:1.可直接连接对应外螺纹硬管.

2.配合日成NBG-G接头和MCR软管接线.

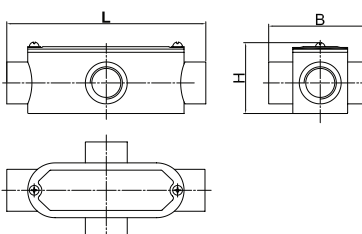
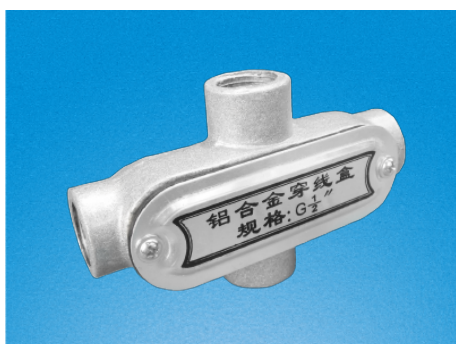
Material:Aluminium metal

Features:1.can be connected with outer thread rigid conduit directly

2.usded with RCCN NBG-G connectors amd ,MCR flexible conduit

## RCCN 日成PB-X型四通分线盒 Pull Box

单位/Unit:mm



型号 Item No.	螺牙规格 Specification	L mm	B mm	H mm	包装 Packing
PB-X-G1/2	1/2"	118	70	41	每包 5pcs
PB-X-G3/4	3/4"	135	72	48	
PB-X-G1	1"	152	85	52	
PB-X-G1-1/4	1 1/4"	180	104	66	
PB-X-G1-1/2	1 1/2"	190	95	70	
PB-X-G2	2"	252	144	82	
PB-X-G2-1/2	2 1/2"	265	165	110	
PB-X-G3	3"	280	182	120	
PB-X-G4	4"	300	210	140	

产品材质:铝合金制成.

产品特性:1.可直接连接对应外螺纹硬管.

2.配合日成NBG-G接头和MCR软管接线.

Material:Aluminium metal

Features:1.can be connected with outer thread rigid conduit directly

2.usded with RCCN NBG-G connectors amd ,MCR flexible conduit